

## New Facilities

*Human PET/CT scanner*



*MICADAS  
(Mini radioCarbon  
Dating System)*



*<sup>60</sup>Co Irradiator  
(Gamma beam)*



## Centro Nacional de Aceleradores

**CNA**

Universidad de Sevilla-Junta de Andalucía-CSIC



Av. Thomas Alva Edison nº 7  
Parque Científico y Tecnológico  
Cartuja, E-41092, Seville, Spain  
Phone: (+34) 954.460.553  
Fax: (+34) 954.460.145  
[www.cna.us.es](http://www.cna.us.es)  
[cna@us.es](mailto:cna@us.es)



# Research

## Cultural Heritage



Determinate elementary composition by IBA techniques

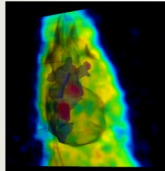
## <sup>14</sup>C Dating



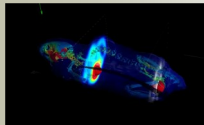
Dating of environmental, historic and artistic samples

## Preclinical Research

Study of glucose metabolism with FDG



Hypoxia marker with FMISO



## Environmental Impact



Plutonium determination in environmental samples

## Nuclear Physics



Lifetime precise determination of nuclei and beam tracking studies

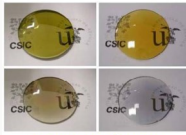
## Aerospace Technology



Electronic circuit behavior under irradiation

## Materials Science

Layers implantation of different elements into new materials and determination of concentration profiles



autor: [www.sincal-icmse.es](http://www.sincal-icmse.es)

# Accelerators

## 3 MV Tandem Accelerator



## 1 MV Tandetron Accelerator



## Cyclotron (Cyclone 18/9)

